



### Braidwood Heritage Centre Update

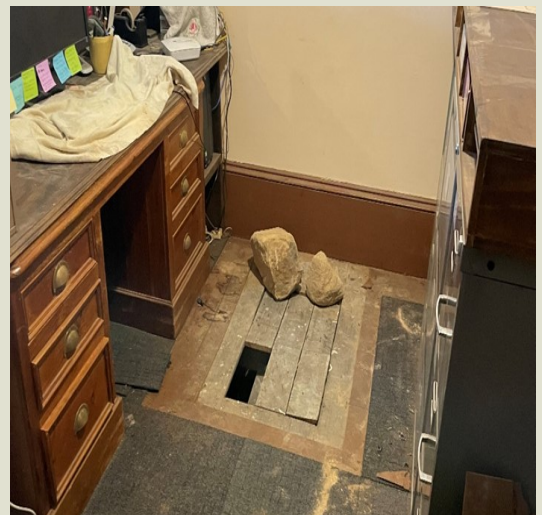
**BDHS committee have decided to close the museum to visitors for the month of July.** The obvious hazards are compounded by the fact that our only gas heating has been cut off owing to construction. Hopefully by August the new electrical power system will be operational once the new entrance area is completed, and we can offer a warm reception.

Construction has resumed under the control of QPRC with GenUrban as the project managers and Trinity as the builders. This follows the withdrawal of NSW Public Works from the project and Greenwich Builders in administration. The principal design consultants (BTB Architects) have also declined further involvement in the project.

- There have been lengthy delays owing to numerous faults left by the previous builders. Many areas required further inspections by qualified certifiers and engineers to identify and recommend rectification.
- Some of the issues identified on the homestay accommodation are- the roof needs extending because it falls short of where the guttering needs to be fitted; the fibro wall cladding needs to be removed because the battens underneath do not appear to be fastened securely; the windows and doors need removing for proper supports to be added; the doors for the disabled access do not comply and need changing; windows need adding to allow light for the disabled room; the white ant barrier need rectification; the steel columns



**Wiring & drainage for air conditioning in accommodation ready for wall cladding.**



***Air conditioning in the museum requires under floor tracking, making it hazardous for volunteers and visitors, hence the decision to close the museum for July.***

## *The Inside Story*

are not properly connected; the floor levels are wrong at the entrance.

### **The list goes on.**

- Air conditioning fit out is underway in both the homestay and museum.
- Construction has commenced on the new museum entrance/reception/shop.
- There has been a change in the proposed enlarging of the window to become the entrance door into the collection. It was found to unnecessary and in fact would have been likely to cause the wall to collapse. Surely this misguided proposal by the architect should have been picked up by Heritage NSW rather than their pedantic insistence on less important placement of out-buildings.
- The existing back door to the museum was found to be compliant with disabled access.
- The floor in outside museum toilet has been removed ready for construction of the new toilets and kitchen.
- The 5-metre-high posts supporting the stage area are to be replaced. TreeCycled from Moruya have supplied replacement iron bark post. This will be a tricky

operation to be undertaken by the builder.

- Funding for Stage 1 has been extended to year end.
- The builders expect to complete Stage 1 by end of September.
- We need to point out that stage 1 does not include all the elements that make the project economically viable.
- Stage 1 does not include the artisan studios, the blacksmith shop, lift for the museum, additional exhibition space, co-working spaces, Heritage Centre washrooms and toilets. All these were originally covered under the \$3.75 million grant.
- Stage 1 does not produce sufficient income to enable employment of a full-time site manager.
- The waste and mismanagement of the allocated \$3.75 million will be pursued with Government in due course. However, we have agreed to delay our political campaign to give QPRC and the builders a chance to deliver what has been nominally called Stage1.

***Peter Smith—President***

**New entrance  
to the museum  
under construction**

